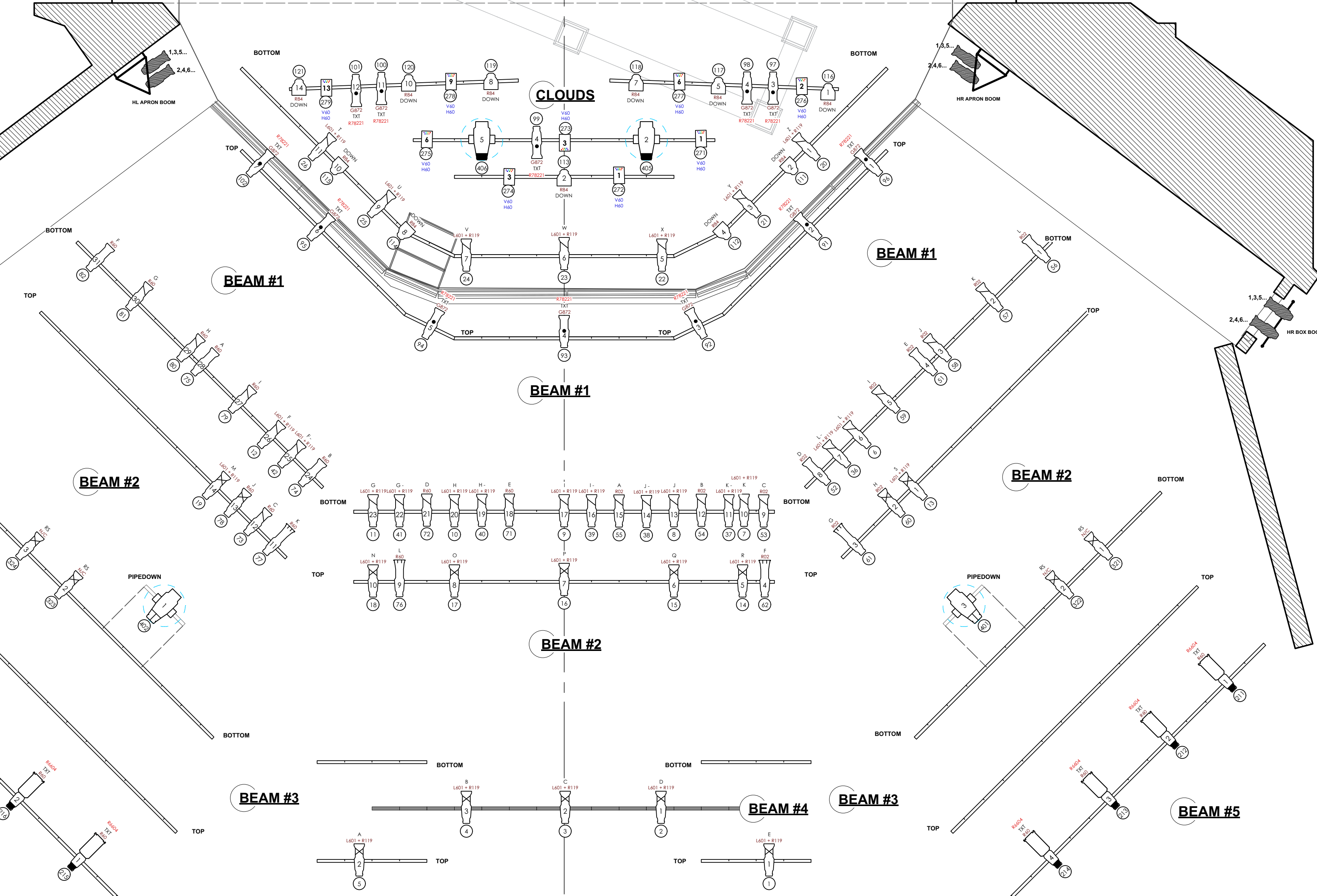
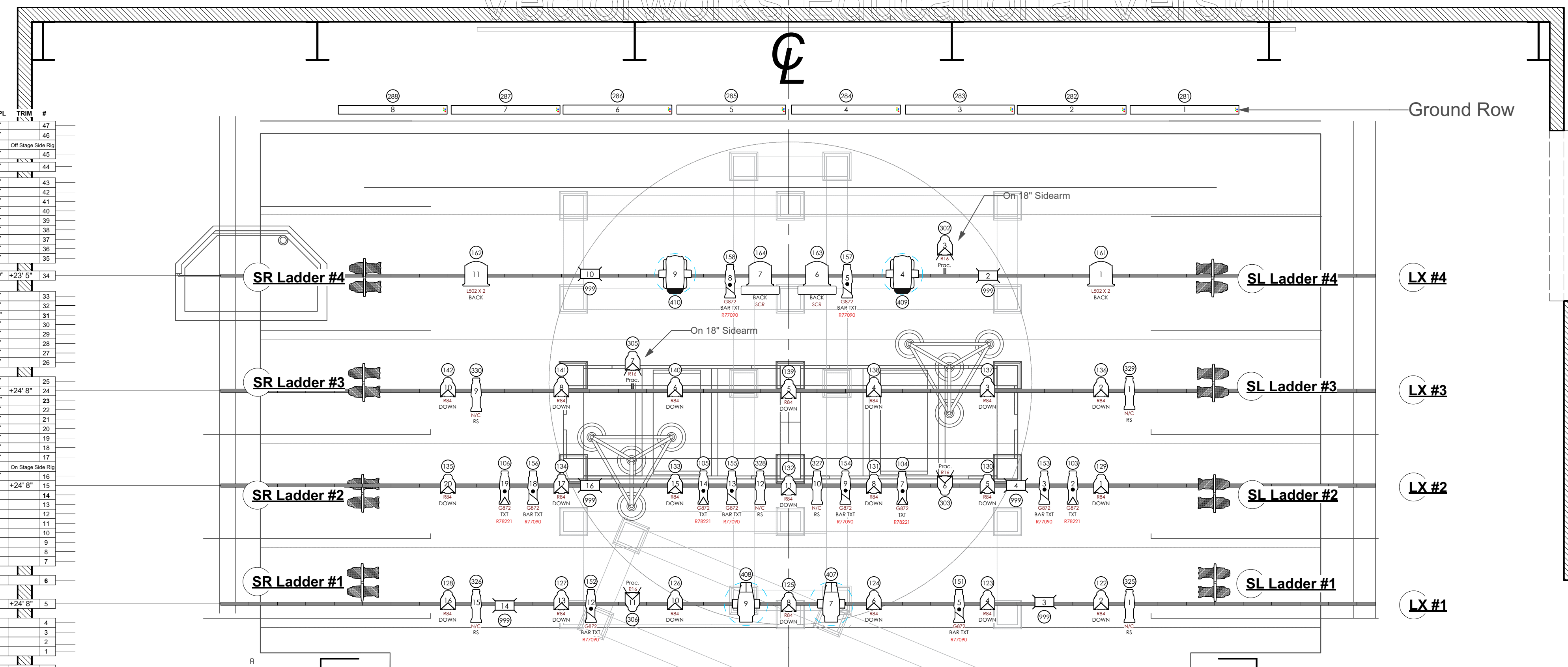


DESCRIPTION	D TO PL	TRIM	#
Prison drop	+28'-0"		47
Black Traveller	+28'-0"		46
Black Traveller	+28'-0"		45
Black Traveller	+28'-0"		44
Black Traveller	+28'-0"		43
Black Traveller	+28'-0"		42
Black Traveller	+28'-0"		41
# 5 legs	+24'-0"		40
# 5 border	+24'-0"		39
# 5 border	+24'-0"		38
# 5 border	+24'-0"		37
# 5 border	+24'-0"		36
# 5 border	+24'-0"		35
LX #4	+24'-0"		34
# 4 Strips	+24'-0"		33
# 4 Strips	+24'-0"		32
# 4 Strips	+24'-0"		31
# 4 Strips	+24'-0"		30
# 4 Strips	+24'-0"		29
# 4 Strips	+24'-0"		28
# 4 Strips	+24'-0"		27
# 4 Strips	+24'-0"		26
Industrial Fixture #2	+24'-0"		25
LX #3	+24'-0"		24
# 3 Strips	+24'-0"		23
# 3 Strips	+24'-0"		22
# 3 Strips	+24'-0"		21
Black Traveller	+24'-0"		20
# 3 legs	+24'-0"		19
# 3 border	+24'-0"		18
Industrial Fixture #1	+24'-0"		17
LX #2	+24'-0"		16
# 2 Strips	+24'-0"		15
# 2 Strips	+24'-0"		14
# 2 Strips	+24'-0"		13
# 2 Strips	+24'-0"		12
# 2 Strips	+24'-0"		11
# 2 Strips	+24'-0"		10
# 2 Strips	+24'-0"		9
# 2 Strips	+24'-0"		8
# 2 Strips	+24'-0"		7
# 1 Strips	+24'-0"		6
LX #1	+24'-0"		5
# 1 legs	+24'-0"		4
Blackout drop	+24'-0"		3
GRAND DRAPPE	+24'-0"		2
VALANCE	+24'-0"		1
PLASTER LINE	+0'-0"		



FOH BEAMS ARE SHOWN WITH "BOTTOM" POSITIONS IN ACTUAL PHYSICAL LOCATION. "TOP" POSITIONS ARE EXPANDED FOR CLARITY, BUT RESIDE DIRECTLY ABOVE "BOTTOM" PIPES.

NOTES:

- Have R132 or R119 available for all Source 4's without template
- Provide plenty of cable length for roving booms and onstage practicals
- Have tophats and barndoors available
- Radiance Hazer to be placed on the Midgal Channel 420

KEY TO INSTRUMENTATION

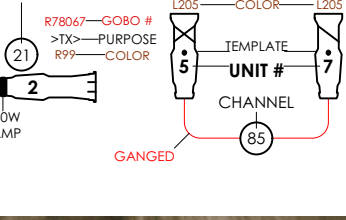
- 14 Degree ETC Source 4 - 575 W
- 9 Degree ETC Source 4 - 575 W
- 24 Degree ETC Source 4 - 575 W
- 34 Degree ETC Source 4 - 575 W
- 50 Degree ETC Source 4 - 575 W
- 50 Degree ETC Source 4 - 750 W
- Source 4 PAR W/ 575w
- Source 4 PAR W/ 575w
- 8" Fresnel 2kw
- 12" Fresnel 3kw
- ETC Selektor Vivid R
- Color Chorus 72

- V1100-TS 1000w
- V1100-A5 575w
- V1300 Spot 1200w

ACCESSORIES

- 18" Sidearm
- Barndoor
- 10" Scroller
- 5" Scroller
- Top Hat
- Half Hat

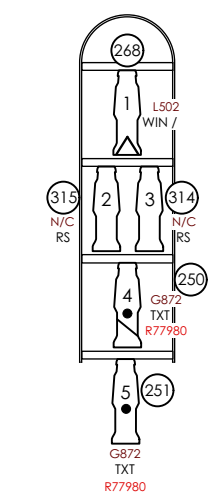
TYPICAL



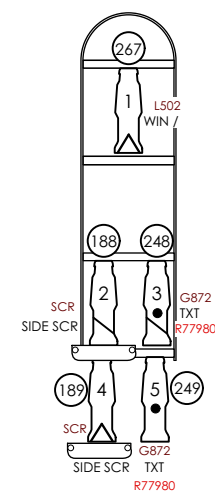
DESIGNER: Erik McCandless  
 ASSISTANT LDR: Eleanor Eberhardt  
 MR: Jack Brock  
 RLD: James St. George  
 RME: Adam Zwick  
 DATE: 1/13/2017  
 SCALE: 1/4" = 1'-0"  
 DRAFTED BY: EAM, EQE  
 REVISION:

Lighting Plot

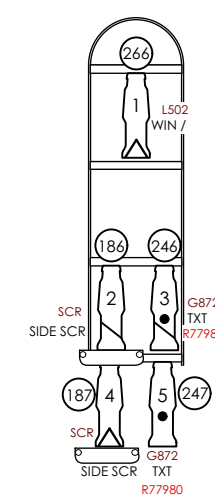
Ladders to be hung via chain motors  
Trim at 14'4" from bottom of ladder



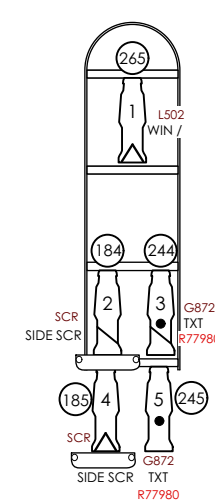
**SR Ladder #4**  
From CL: 22'5"  
From PL: 20'8"  
Trim: 14'4"



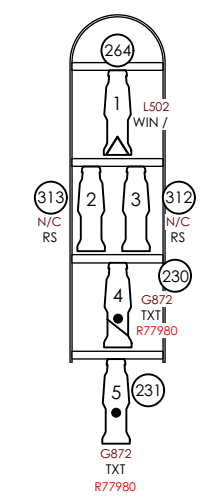
**SR Ladder #3**  
From CL: 22'5"  
From PL: 15'2"  
Trim: 14'4"



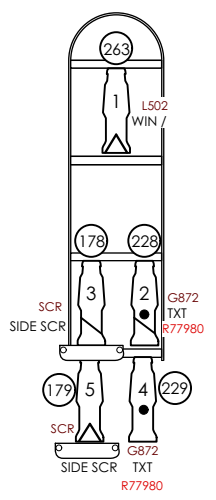
**SR Ladder #2**  
From CL: 22'5"  
From PL: 9'4"  
Trim: 14'4"



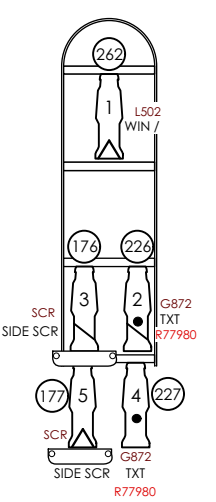
**SR Ladder #1**  
From CL: 22'5"  
From PL: 4'7"  
Trim: 14'4"



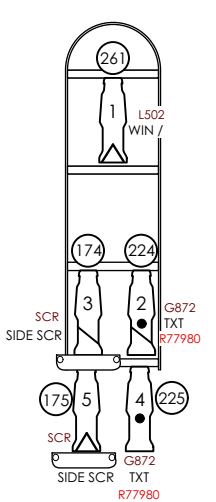
**SL Ladder #4**  
From CL: 22'5"  
From PL: 20'8"  
Trim: 14'4"



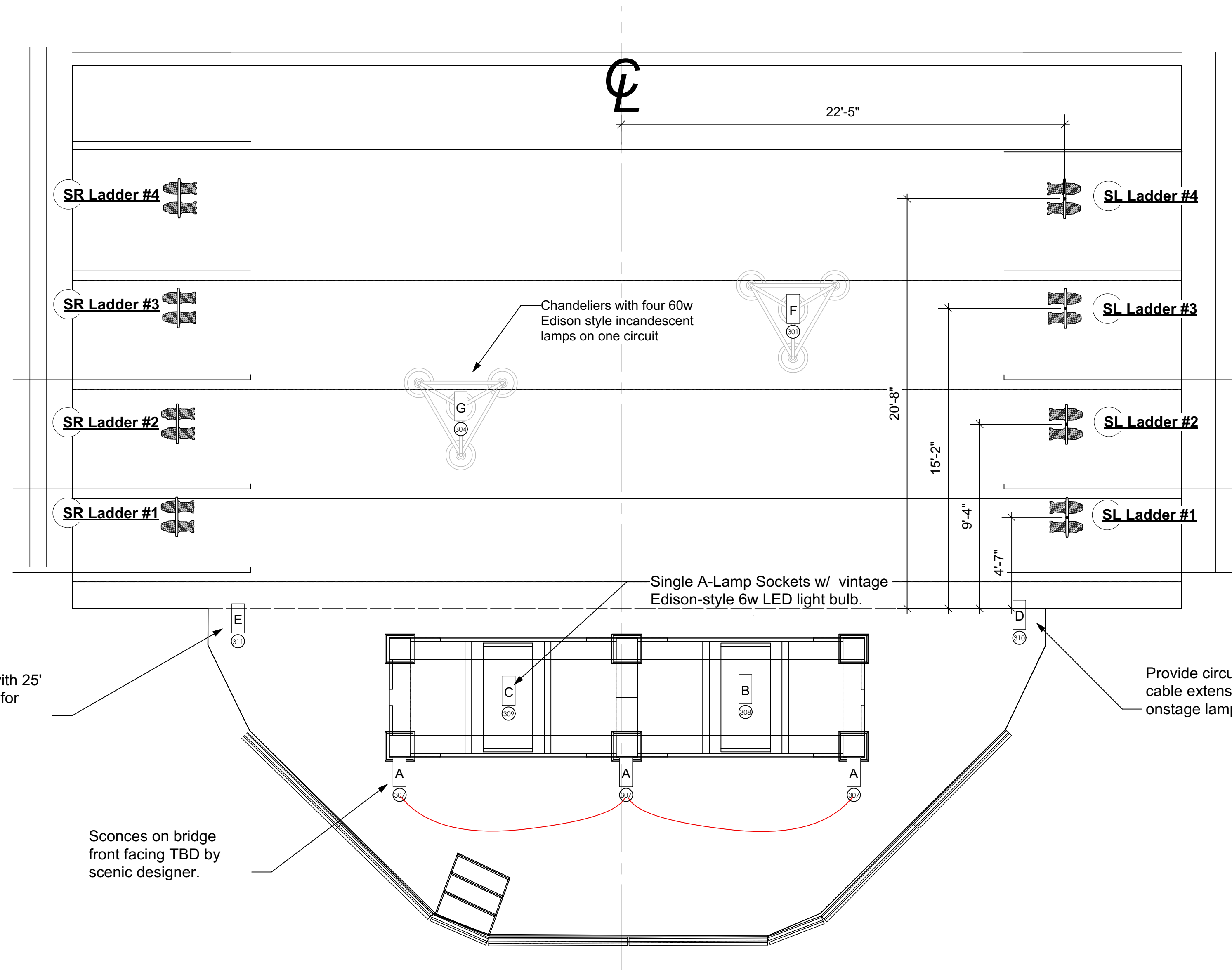
**SL Ladder #3**  
From CL: 22'5"  
From PL: 15'2"  
Trim: 14'4"



**SL Ladder #2**  
From CL: 22'5"  
From PL: 9'4"  
Trim: 14'4"

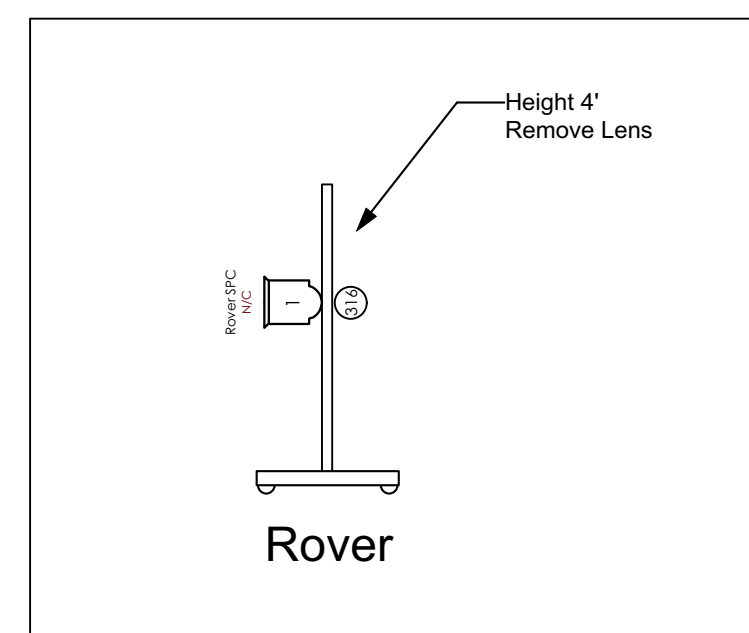


**SL Ladder #1**  
From CL: 22'5"  
From PL: 4'7"  
Trim: 14'4"



Provide circuit with 25' cable extension for onstage lamps

Provide circuit with 25' cable extension for onstage lamps



\*The Bridge unit will require 3 wireless dimmers

FIXTURE	WATTAGE	CHANNEL NUMBER	DESCRIPTION
A	6	307	BRIDGE SCONCE x 3
B	6	308	UNDER BRIDGE LIGHT
C	6	309	UNDER BRIDGE LIGHT
D	N/A	310	OPEN CIRCUIT/ PROP LAMP
E	N/A	311	OPEN CIRCUIT / PROP LAMP
F	4 x 60W	301	CHANDELIER
G	4 x 60W	304	CHANDELIER

**NOTES:**

- Have R132 or R119 available for all Source 4's without template
- Provide plenty of cable length for roving booms and onstage practicals
- Have tophats and barndoors available
- Radiance Hazer to be placed on the Midgal Channel 420

**KEY TO INSTRUMENTATION**

- 14 Degree ETC Source 4 - 575 W
- 9 Degree ETC Source 4 - 575 W
- 24 Degree ETC Source 4 - 575 W
- 34 Degree ETC Source 4 - 575 W
- 50 Degree ETC Source 4 - 575 W
- 50 Degree ETC Source 4 - 750 W
- Source 4 PAR WFL 575w
- Source 4 PAR WFL 575w
- 8" Fresnel 2 kW
- 12" Fresnel 3 kW
- ETC Selektor Vivid R

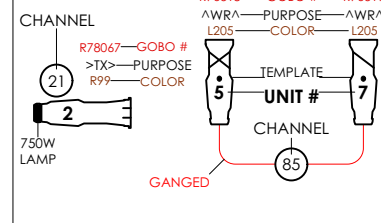
**Color Chorus F2**

- V1100-TS 1000w
- V1100-A5 575w
- V1300 Spot 1200w

**ACCESSORIES**

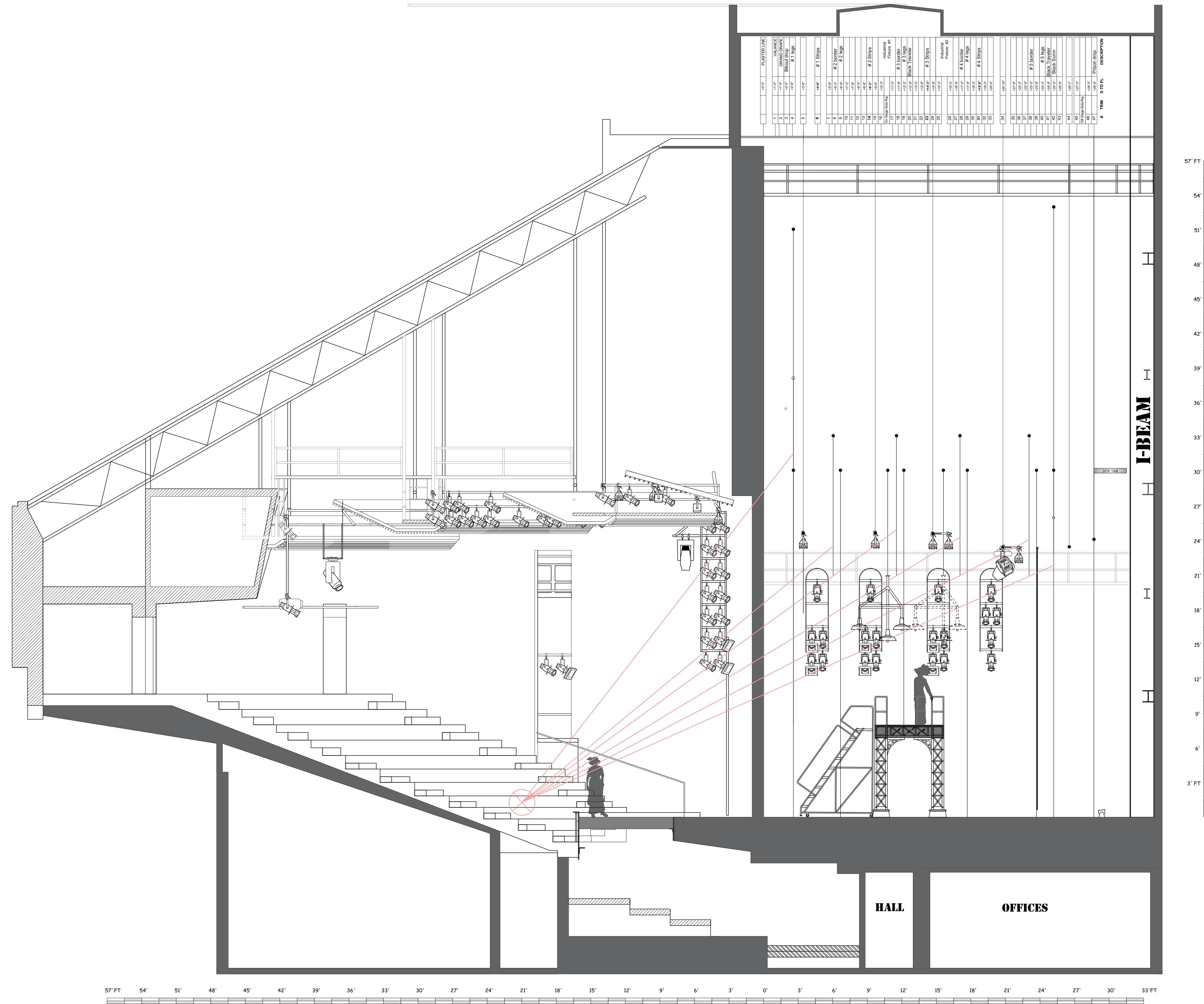
- 18" Sidearm
- Barndoor
- Wyskon C41 10" Scroller
- 18" Scroller
- Top Hat
- Half Hat

**TYPICAL**



DESIGNER: Erik McCandless  
ASSISTANT LDR: Eleanor Eberhardt  
MGR: Jack Brock  
PLN: James H. Coyle  
DRA: Adam Zook  
DATE: 1/13/2017  
SCALE: 1/4" = 1'-0"  
DRAFTED BY: EAM, EQE  
REVISION:

**Ladders & Practicals**

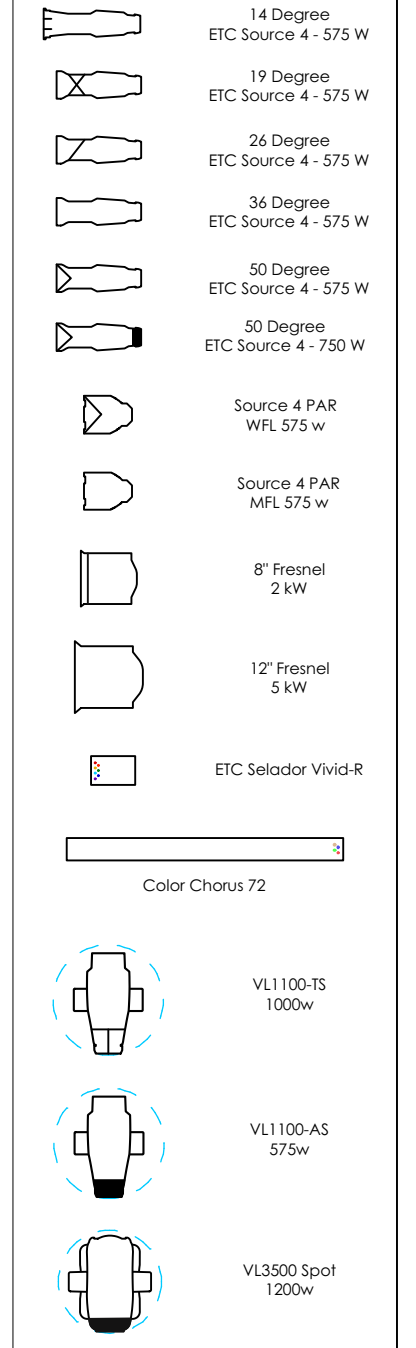


NO.	PLASTER LINE	QUANTITY	DESCRIPTION
1	1'-0" - 1'-0"	1	Block Strip # 1 Strip
2	1'-0" - 1'-0"	1	Block Strip # 1 Strip
3	1'-0" - 1'-0"	1	Block Strip # 1 Strip
4	1'-0" - 1'-0"	1	Block Strip # 1 Strip
5	1'-0" - 1'-0"	1	Block Strip # 1 Strip
6	1'-0" - 1'-0"	1	Block Strip # 1 Strip
7	1'-0" - 1'-0"	1	Block Strip # 1 Strip
8	1'-0" - 1'-0"	1	Block Strip # 1 Strip
9	1'-0" - 1'-0"	1	Block Strip # 1 Strip
10	1'-0" - 1'-0"	1	Block Strip # 1 Strip
11	1'-0" - 1'-0"	1	Block Strip # 1 Strip
12	1'-0" - 1'-0"	1	Block Strip # 1 Strip
13	1'-0" - 1'-0"	1	Block Strip # 1 Strip
14	1'-0" - 1'-0"	1	Block Strip # 1 Strip
15	1'-0" - 1'-0"	1	Block Strip # 1 Strip
16	1'-0" - 1'-0"	1	Block Strip # 1 Strip
17	1'-0" - 1'-0"	1	Block Strip # 1 Strip
18	1'-0" - 1'-0"	1	Block Strip # 1 Strip
19	1'-0" - 1'-0"	1	Block Strip # 1 Strip
20	1'-0" - 1'-0"	1	Block Strip # 1 Strip
21	1'-0" - 1'-0"	1	Block Strip # 1 Strip
22	1'-0" - 1'-0"	1	Block Strip # 1 Strip
23	1'-0" - 1'-0"	1	Block Strip # 1 Strip
24	1'-0" - 1'-0"	1	Block Strip # 1 Strip
25	1'-0" - 1'-0"	1	Block Strip # 1 Strip
26	1'-0" - 1'-0"	1	Block Strip # 1 Strip
27	1'-0" - 1'-0"	1	Block Strip # 1 Strip
28	1'-0" - 1'-0"	1	Block Strip # 1 Strip
29	1'-0" - 1'-0"	1	Block Strip # 1 Strip
30	1'-0" - 1'-0"	1	Block Strip # 1 Strip
31	1'-0" - 1'-0"	1	Block Strip # 1 Strip
32	1'-0" - 1'-0"	1	Block Strip # 1 Strip
33	1'-0" - 1'-0"	1	Block Strip # 1 Strip
34	1'-0" - 1'-0"	1	Block Strip # 1 Strip
35	1'-0" - 1'-0"	1	Block Strip # 1 Strip
36	1'-0" - 1'-0"	1	Block Strip # 1 Strip
37	1'-0" - 1'-0"	1	Block Strip # 1 Strip
38	1'-0" - 1'-0"	1	Block Strip # 1 Strip
39	1'-0" - 1'-0"	1	Block Strip # 1 Strip
40	1'-0" - 1'-0"	1	Block Strip # 1 Strip
41	1'-0" - 1'-0"	1	Block Strip # 1 Strip
42	1'-0" - 1'-0"	1	Block Strip # 1 Strip
43	1'-0" - 1'-0"	1	Block Strip # 1 Strip
44	1'-0" - 1'-0"	1	Block Strip # 1 Strip
45	1'-0" - 1'-0"	1	Block Strip # 1 Strip
46	1'-0" - 1'-0"	1	Block Strip # 1 Strip
47	1'-0" - 1'-0"	1	Block Strip # 1 Strip
48	1'-0" - 1'-0"	1	Block Strip # 1 Strip
49	1'-0" - 1'-0"	1	Block Strip # 1 Strip
50	1'-0" - 1'-0"	1	Block Strip # 1 Strip
51	1'-0" - 1'-0"	1	Block Strip # 1 Strip
52	1'-0" - 1'-0"	1	Block Strip # 1 Strip
53	1'-0" - 1'-0"	1	Block Strip # 1 Strip
54	1'-0" - 1'-0"	1	Block Strip # 1 Strip
55	1'-0" - 1'-0"	1	Block Strip # 1 Strip
56	1'-0" - 1'-0"	1	Block Strip # 1 Strip
57	1'-0" - 1'-0"	1	Block Strip # 1 Strip
58	1'-0" - 1'-0"	1	Block Strip # 1 Strip
59	1'-0" - 1'-0"	1	Block Strip # 1 Strip
60	1'-0" - 1'-0"	1	Block Strip # 1 Strip
61	1'-0" - 1'-0"	1	Block Strip # 1 Strip
62	1'-0" - 1'-0"	1	Block Strip # 1 Strip
63	1'-0" - 1'-0"	1	Block Strip # 1 Strip
64	1'-0" - 1'-0"	1	Block Strip # 1 Strip
65	1'-0" - 1'-0"	1	Block Strip # 1 Strip
66	1'-0" - 1'-0"	1	Block Strip # 1 Strip
67	1'-0" - 1'-0"	1	Block Strip # 1 Strip
68	1'-0" - 1'-0"	1	Block Strip # 1 Strip
69	1'-0" - 1'-0"	1	Block Strip # 1 Strip
70	1'-0" - 1'-0"	1	Block Strip # 1 Strip
71	1'-0" - 1'-0"	1	Block Strip # 1 Strip
72	1'-0" - 1'-0"	1	Block Strip # 1 Strip
73	1'-0" - 1'-0"	1	Block Strip # 1 Strip
74	1'-0" - 1'-0"	1	Block Strip # 1 Strip
75	1'-0" - 1'-0"	1	Block Strip # 1 Strip
76	1'-0" - 1'-0"	1	Block Strip # 1 Strip
77	1'-0" - 1'-0"	1	Block Strip # 1 Strip
78	1'-0" - 1'-0"	1	Block Strip # 1 Strip
79	1'-0" - 1'-0"	1	Block Strip # 1 Strip
80	1'-0" - 1'-0"	1	Block Strip # 1 Strip
81	1'-0" - 1'-0"	1	Block Strip # 1 Strip
82	1'-0" - 1'-0"	1	Block Strip # 1 Strip
83	1'-0" - 1'-0"	1	Block Strip # 1 Strip
84	1'-0" - 1'-0"	1	Block Strip # 1 Strip
85	1'-0" - 1'-0"	1	Block Strip # 1 Strip
86	1'-0" - 1'-0"	1	Block Strip # 1 Strip
87	1'-0" - 1'-0"	1	Block Strip # 1 Strip
88	1'-0" - 1'-0"	1	Block Strip # 1 Strip
89	1'-0" - 1'-0"	1	Block Strip # 1 Strip
90	1'-0" - 1'-0"	1	Block Strip # 1 Strip
91	1'-0" - 1'-0"	1	Block Strip # 1 Strip
92	1'-0" - 1'-0"	1	Block Strip # 1 Strip
93	1'-0" - 1'-0"	1	Block Strip # 1 Strip
94	1'-0" - 1'-0"	1	Block Strip # 1 Strip
95	1'-0" - 1'-0"	1	Block Strip # 1 Strip
96	1'-0" - 1'-0"	1	Block Strip # 1 Strip
97	1'-0" - 1'-0"	1	Block Strip # 1 Strip
98	1'-0" - 1'-0"	1	Block Strip # 1 Strip
99	1'-0" - 1'-0"	1	Block Strip # 1 Strip
100	1'-0" - 1'-0"	1	Block Strip # 1 Strip

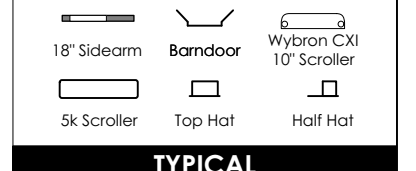
**NOTES:**

- Have R132 or R119 available for all Source 4's without template
- Provide plenty of cable length for roving booms and onstage practicals
- Have top hats and banddoors available
- Radiance Hazer to be placed on the Midgal Channel 420

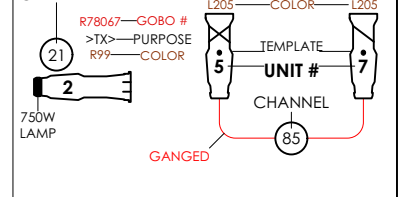
**KEY TO INSTRUMENTATION**



**ACCESSORIES**



**TYPICAL**



DESIGNER: Erik McConder  
 ASSISTANT LDR: Eleanor Eberhardt  
 ME: Jack Brock  
 ELD: James H. Cook  
 RME: Adam Zook  
 DATE: 1/13/2017  
 SCALE: 1/4" = 1'-0"  
 DRAFTED BY: EAM, EQE  
 REVISION:

**Section**

PLATE  
**3 OF 3**